

Saphireinschraubdüse 976

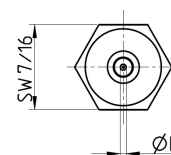
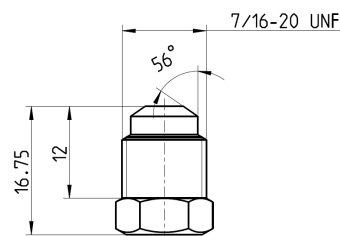
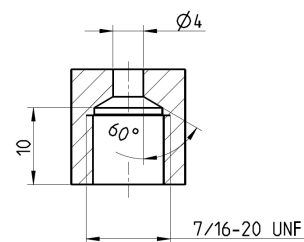


Eigenschaften und Vorteile

- Lange Lebensdauer
- Konstante Strahlqualität
- Stark gebündelter Wasserstrahl
- Punktstrahl mit hoher Energiedichte
- Einfache Installation und Demontage
- Swiss Quality

Anwendungen

- Automobil- und Luftfahrtindustrie
- Bauindustrie
- Bergbau
- Chemie
- Eisen-, Stahl- und Metallindustrie
- Energiewirtschaft
- Getränkeindustrie
- Glas-, Porzellan- und Keramikindustrie
- Holzindustrie
- Kommunalbetriebe
- Landwirtschaft
- Maschinen- und Apparatebau
- Nahrungsmittelindustrie
- Offshore-Einsätze
- Schiffbau
- Verkehrsbetriebe
- Zellstoff- und Papierindustrie
- Zement- und Betonindustrie



| EIGENSCHAFTEN | Typ |
|-------------------------|-----------|
| | 976 |
| Betriebsdruck (bar) | max. 3000 |
| Betriebstemperatur (°C) | max. 150° |
| Anzugsmoment (Nm) | max. 40 |

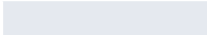
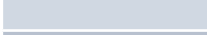

Leistungsdaten

| ART. NR. | DÜSEN GRÖSSE in US Gal/min bei 40 psi | DÜSEN Ød mm | DRUCK in psi / bar | | | | | | | |
|--------------------------|--|----------------|--------------------|-------------|--------------|--------------|--------------|--------------|--------------|--------------|
| | | | psi 2900 | psi 7250 | psi 10875 | psi 14500 | psi 21750 | psi 29000 | psi 36250 | psi 43500 |
| | | | bar 200 | bar 500 | bar 750 | bar 1000 | bar 1500 | bar 2000 | bar 2500 | bar 3000 |
| DURCHFLUSSMENGE in l/min | | | | | | | | | | |
| 32288.0100 | 0002 | 0.10 | 0.064 | 0.100 | 0.122 | 0.141 | 0.171 | 0.196 | 0.217 | 0.237 |
| 32288.0125 | 0003 | 0.125 | 0.100 | 0.157 | 0.191 | 0.220 | 0.267 | 0.306 | 0.340 | 0.370 |
| 32288.0150 | 0004 | 0.15 | 0.143 | 0.226 | 0.275 | 0.316 | 0.385 | 0.441 | 0.489 | 0.532 |
| 32288.0175 | 0006 | 0.175 | 0.195 | 0.307 | 0.375 | 0.431 | 0.523 | 0.600 | 0.666 | 0.725 |
| 32288.0200 | 0008 | 0.20 | 0.255 | 0.401 | 0.489 | 0.563 | 0.684 | 0.784 | 0.870 | 0.946 |
| 32288.0250 | 0012 | 0.25 | 0.402 | 0.632 | 0.771 | 0.887 | 1.078 | 1.235 | 1.371 | 1.492 |
| 32288.0300 | 0018 | 0.30 | 0.579 | 0.911 | 1.111 | 1.277 | 1.552 | 1.778 | 1.974 | 2.148 |
| 32288.0350 | 0025 | 0.35 | 0.808 | 1.270 | 1.549 | 1.781 | 2.165 | 2.481 | 2.754 | 2.997 |
| 32288.0400 | 0032 | 0.40 | 1.055 | 1.659 | 2.023 | 2.327 | 2.827 | 3.240 | 3.597 | 3.914 |
| 32288.0450 | 0041 | 0.45 | 1.339 | 2.106 | 2.568 | 2.953 | 3.588 | 4.112 | 4.565 | 4.968 |
| 32288.0500 | 0051 | 0.50 | 1.653 | 2.600 | 3.170 | 3.646 | 4.430 | 5.077 | 5.636 | 6.133 |
| 32288.0550 | 0062 | 0.55 | 2.008 | 3.159 | 3.853 | 4.430 | 5.383 | 6.169 | 6.849 | 7.453 |
| 32288.0600 | 0074 | 0.60 | 2.390 | 3.759 | 4.585 | 5.272 | 6.406 | 7.342 | 8.151 | 8.869 |
| 32288.0650 | 0087 | 0.65 | 2.813 | 4.425 | 5.396 | 6.205 | 7.540 | 8.641 | 9.593 | 10.438 |
| 32288.0700 | 0100 | 0.70 | 3.262 | 5.131 | 6.258 | 7.196 | 8.744 | 10.022 | 11.125 | 12.106 |
| 32288.0750 | 0115 | 0.75 | 3.745 | 5.891 | 7.184 | 8.261 | 10.038 | 11.504 | 12.772 | 13.897 |
| 32288.0800 | 0131 | 0.80 | 4.261 | 6.702 | 8.174 | 9.399 | 11.421 | 13.090 | 14.531 | 15.812 |
| 32288.0850 | 0150 | 0.85 | 4.878 | 7.673 | 9.357 | 10.761 | 13.075 | 14.985 | 16.635 | 18.102 |
| 32288.0900 | 0168 | 0.90 | 5.469 | 8.602 | 10.491 | 12.064 | 14.658 | 16.800 | 18.650 | 20.294 |
| 32288.0950 | 0192 | 0.95 | 6.254 | 9.837 | 11.997 | 13.796 | 16.763 | 19.212 | 21.328 | 23.208 |
| 32288.1000 | 0213 | 1.00 | 6.930 | 10.900 | 13.293 | 15.287 | 18.574 | 21.288 | 23.632 | 25.715 |
| 32288.1100 | 0258 | 1.10 | 8.397 | 13.207 | 16.107 | 18.522 | 22.505 | 25.793 | 28.634 | 31.158 |
| 32288.1200 | 0307 | 1.20 | 9.993 | 15.717 | 19.168 | 22.042 | 26.783 | 30.696 | 34.077 | 37.080 |
| 32288.1300 | 0361 | 1.30 | 11.728 | 18.446 | 22.496 | 25.869 | 31.433 | 36.025 | 39.993 | 43.518 |
| 32288.1400 | 0418 | 1.40 | 13.601 | 21.393 | 26.090 | 30.002 | 36.455 | 41.780 | 46.382 | 50.470 |
| 32288.1500 | 0480 | 1.50 | 15.614 | 24.558 | 29.950 | 34.441 | 41.849 | 47.962 | 53.245 | 57.938 |
| 32288.1600 | 0546 | 1.60 | 17.765 | 27.942 | 34.077 | 39.187 | 47.615 | 54.570 | 60.581 | 65.920 |
| 32288.1700 | 0617 | 1.70 | 20.055 | 31.544 | 38.470 | 44.238 | 53.753 | 61.605 | 68.390 | 74.418 |
| 32288.1800 | 0692 | 1.80 | 22.484 | 35.364 | 43.129 | 49.596 | 60.263 | 69.066 | 76.673 | 83.431 |
| 32288.1900 | 0771 | 1.90 | 25.051 | 39.402 | 48.054 | 55.259 | 67.144 | 76.953 | 85.428 | 92.958 |
| 32288.2000 | 0854 | 2.00 | 27.758 | 43.659 | 53.245 | 61.229 | 74.398 | 85.266 | 94.658 | 103.001 |
| 32288.2100 | 0941 | 2.10 | 30.603 | 48.134 | 58.703 | 67.505 | 82.024 | 94.006 | 104.360 | 113.558 |
| 32288.2200 | 1103 | 2.20 | 35.856 | 56.397 | 68.780 | 79.093 | 96.104 | 110.143 | 122.274 | 133.052 |
| 32288.2300 | 1205 | 2.30 | 39.190 | 61.641 | 75.175 | 86.447 | 105.040 | 120.384 | 133.643 | 145.422 |
| 32288.2400 | 1313 | 2.40 | 42.672 | 67.117 | 81.854 | 94.127 | 114.372 | 131.080 | 145.517 | 158.343 |
| 32288.2500 | 1424 | 2.50 | 46.302 | 72.827 | 88.817 | 102.135 | 124.102 | 142.230 | 157.896 | 171.813 |
| 32288.2600 | 1540 | 2.60 | 50.080 | 78.770 | 96.064 | 110.469 | 134.228 | 153.836 | 170.780 | 185.833 |
| 32288.2700 | 1661 | 2.70 | 54.007 | 84.945 | 103.596 | 119.130 | 144.752 | 165.898 | 184.170 | 200.402 |
| 32288.2800 | 1787 | 2.80 | 58.081 | 91.354 | 111.412 | 128.118 | 155.673 | 178.414 | 198.064 | 215.522 |
| 32288.2900 | 1916 | 2.90 | 62.304 | 97.996 | 119.512 | 137.432 | 166.991 | 191.385 | 212.465 | 231.191 |
| 32288.3000 | 2051 | 3.00 | 66.675 | 104.871 | 127.896 | 147.074 | 178.707 | 204.812 | 227.370 | 247.410 |

Anweisung

Beim manuellen Einsatz von Hockdruckspritzpistolen und -Lanzen, darf die aufzunehmende Rückstosskraft in der Längsachse der Spitzeinrichtung 250N nicht übersteigen!

Übersteigt die Rückstosskraft 150N, muss mit einer Körperstütze gearbeitet werden!

| | |
|---|---------|
|  | < 150 N |
|  | < 250 N |
|  | > 250 N |